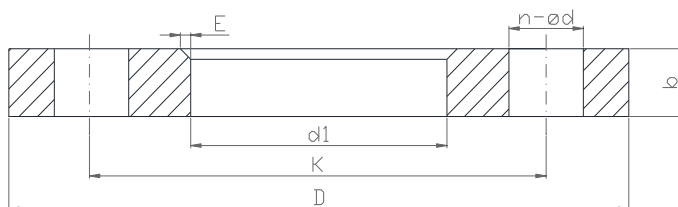


## FLANGIA PER CARTELLA PE - PN16

## FLANGE FOR PE FLANGE ADAPTOR - PN16

## CARATTERISTICHE PRINCIPALI - MAIN FEATURES

<b>DIMENSIONI:</b>	Foratura in accordo a EN 1092-1	<b>DIMENSIONS:</b>	Drilling according to EN 1092-1
<b>MATERIALI:</b>	Acciaio P245GH	<b>MATERIALS:</b>	P245GH Steel



DN	TUBO PE PE PIPE	d1	K	D	n - ød	b	VITE SCREW	E	kg
20	25	34	75	105	4 - 14	12	M12	4	0.7
25	32	42	85	115	4 - 14	14	M12	4	0.9
32	40	52	100	140	4 - 18	14	M16	5	1.3
40	50	62	110	150	4 - 18	16	M16	5	1.7
50	63	78	125	165	4 - 18	16	M16	5	2.0
65	75	92	145	185	*8 - 18	16	M16	6	2.3
80	90	108	160	200	8 - 18	18	M16	6	2.9
100	110	128	180	220	8 - 18	18	M16	6	3.3
100	125	135	180	220	8 - 18	18	M16	6	3.1
125	140	158	210	250	8 - 18	18	M16	6	3.9
150	160	178	240	285	8 - 22	20	M20	6	5.6
150	180	188	240	285	8 - 22	20	M20	6	5.2
200	200 / 225	238	295	340	12 - 22	22	M20	6	7.2
250	250 / 280	290	350	395	12 - 22	26	M20	8	11.5
300	315	340	410	460	12 - 26	28	M24	8	15.1
350	355	377	470	520	16 - 26	30	M24	8	21.7
400	400	431	525	580	16 - 26	35	M27	8	29.5

\* su richiesta 4 fori. 4 holes available on request.