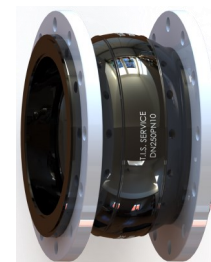




PN 10 - ART. N315 TIS1

PN 16 - ART. N316 TIS1

GIUNTO IN GOMMA ANTIVIBRANTE FLANGIATO PN10 - PN16
 FLANGED RUBBER FLEXIBLE JOINT PN10 - PN16

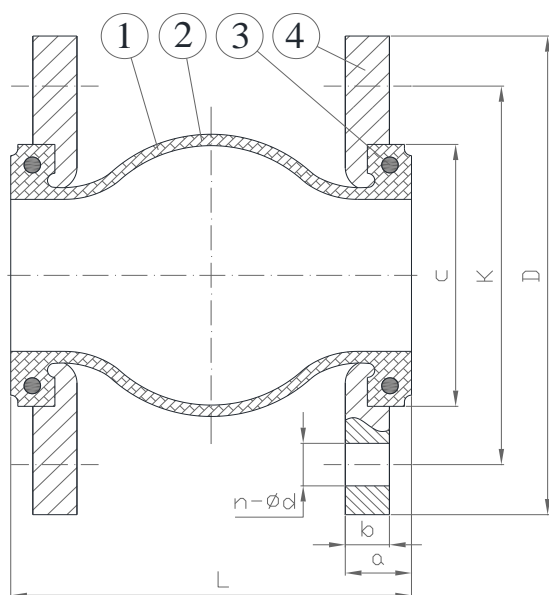


APPLICAZIONE:

Acqua e altri liquidi non pericolosi per sistemi industriali (compatibili con i materiali del giunto).

APPLICATION:

water and other non-hazardous liquids for industrial systems (compatible with joint materials).



CARATTERISTICHE PRINCIPALI - MAIN FEATURES	
FORATURA FLANGE:	EN 1092-1
TEMPERATURA DI ESERCIZIO:	Min. -10°C (escluso congelamento) Max. +80°C
PRESSIONE DI ESERCIZIO:	DN32-300 16bar DN350-600 10bar
FLANGES DRILLING:	EN 1092-1
WORKING TEMPERATURE:	Min. -10°C (excluded frost) Max. +80°C.
WORKING PRESSURE:	DN32-300 16bar DN350-600 10bar

COMPONENTI - PARTS		MATERIALI - MATERIALS	
1	CORPO BODY	EPDM	EPDM
2	RINFORZO REINFORCE	NYLON	NYLON
3	FILO DI RINFORZO WIRE	ACCIAIO	STEEL
4	FLANGIA GIREVOLE FLOATING FLANGE	ACCIAIO ZINCATO	GALVANIZED STEEL

Dim (Inch)	DN	C	K		D		n-ød		b		a	L	Movimenti assiali Axial displacement		Movimento laterale Lateral displacement	Angolo di inclinazione Angle of deflection	W (kg)	
			PN10	PN16	PN10	PN16	PN10	PN16	PN10	PN16			Compressione Compression	Estensione Extension			PN10	PN16
1"1/4	32	77	100	100	140	140	4-18	4-18	15	15	23	95	10	6	10	25	3.0	3.0
1"1/2	40	77	110	110	150	150	4-18	4-18	15	15	24	95	10	6	10	25	3.6	3.6
2"	50	88	125	125	165	165	4-18	4-18	15	15	24	105	10	6	10	25	4.2	4.2
2"1/2	65	108	145	145	185	185	4-18	4-18	15	15	26	115	15	8	12	25	5.3	5.3
3"	80	120	160	160	200	200	8-18	8-18	17	17	27	135	15	8	12	25	6.3	6.3
4"	100	150	180	180	220	220	8-18	8-18	17	17	27	135	20	12	16	15	7.0	7.0
5"	125	180	210	210	250	250	8-18	8-18	19	19	29	165	20	12	16	15	9.5	9.5
6"	150	213	240	240	285	285	8-23	8-23	21	21	31	180	20	12	16	15	13.0	13.0
8"	200	263	295	295	340	340	8-23	12-23	21	21	33	205	20	12	16	15	17.2	16.6
10"	250	324	350	355	395	405	12-23	12-27	23	23	33	240	30	14	25	8	21.7	23.8
12"	300	374	400	410	445	460	12-23	12-27	23	25	40	260	30	14	25	8	28.0	32.8
14"	350	412	460	470	505	520	16-23	16-27	25	25	38	265	30	14	25	8	37.0	42.0
16"	400	475	515	525	565	580	16-27	16-30	25	27	43	265	30	14	25	8	46.5	50.0
18"	450	526	565	585	615	640	20-27	20-30	25	29	48	265	30	14	25	8	48.7	62.0
20"	500	575	620	650	670	715	20-27	20-33	27	29	48	265	30	14	25	8	61.0	84.0
24"	600	685	725	770	780	840	20-30	20-36	27	29	-	265	30	14	25	8	68.5	105