



ART. 038016 TIS1

MANICOTTO ELETTROSALDABILE, PE 100, SDR 11

ELECTROFUSION COUPLER, PE 100, SDR 11

APPLICAZIONE:

Impianti di acquedottistica, di convogliamento gas combustibili, di fognature civili ed industriali, di irrigazione etc...

APPLICATION:

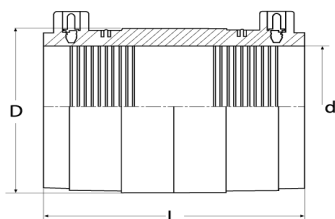
Water pipeline systems, for gas, civil and industrial sewerage, irrigation etc...

CARATTERISTICHE PRINCIPALI - MAIN FEATURES

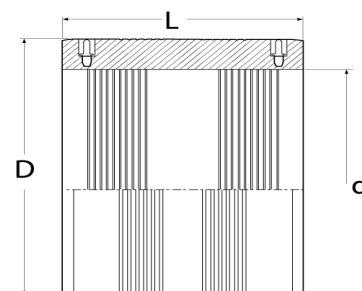
NORME PRODOTTO:	UNI EN 1555-3 UNI EN 12201-3 UNI EN ISO 15494	PRODUCT STANDARS:	UNI EN 1555-3 UNI EN 12201-3 UNI EN ISO 15494
MASSIMA PRESSIONE DI ESERCIZIO AMMESSA:	Acqua 16 bar Gas 5 bar	MAXIMUM OPERATING PRESSURE:	Water 16 bar Gas 5 bar
TEMPERATURA DI ESERCIZIO:	Max. +60°C	WORKING TEMPERATURE:	Max. +60°C
RAPPORTO PRESSIONE / TEMPERATURA	Conforme con UNI EN 1555-3 - UNI EN 12201-3	PRESSURE / TEMPERATURE RATING	According to UNI EN 1555-3 - UNI EN 12201-3



TYPE A



TYPE B



d	D	L	Type	kg
20	33	60	A	0.03
25	41	71	A	0.04
32	48	81	A	0.07
40	55	83	A	0.09
50	67	98	A	0.13
63	80	108	A	0.18
75	97	117	A	0.25
90	119	130	A	0.40
110	142	137	A	0.67
125	160	150	A	0.85
140	180	158	A	1.06
160	198	161	A	1.30
180	227	166	A	1.69
200	250	200	A	2.50

d	D	L	Type	kg
225	277	200	A	3.80
250	310	210	A	4.90
280	345	220	A	10.46
315	390	230	A	12.66
355	440	255	A	16.50
400	495	300	B	20.29
450	554	320	B	25.00
500	615	365	B	35.00
560	690	400	B	48.50
630	775	420	B	63.80
710	880	445	B	90.00
800	995	470	B	122.70
900	1100	500	B	150.00
1000	1230	500	B	191.30