



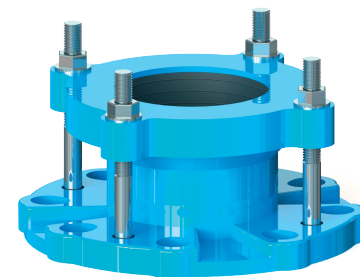
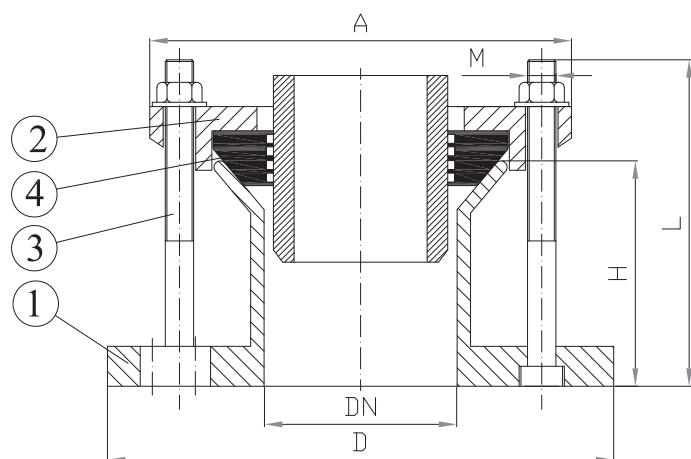
## ART. N335 TIS1

**GIUNTO UNIVERSALE FLANGIATO PN10-PN16**  
**FLANGE ADAPTER PN10-PN16**
**APPLICAZIONE:**

Collegamento di tubi per acqua in acciaio, ghisa e PE.

**APPLICATION:**

Steel, PE and ductile iron water pipes connections.



## CARATTERISTICHE PRINCIPALI - MAIN FEATURES

<b>FLANGIA:</b>	Foratura PN10/PN16 in accordo a EN1092
<b>COLLAUDI:</b>	EN 12266-1
<b>PRESSIONE ESERCIZIO:</b>	Max. 16bar
<b>TEMP. ESERCIZIO:</b>	Max. +80°C
<b>COPPIA DI SERRAGGIO:</b>	75Nm da effettuarsi con chiave dinamometrica.
<b>FLANGE:</b>	Boring PN10/PN16 according to EN1092
<b>TESTS:</b>	EN 12266-1
<b>WORKING PRESSURE:</b>	Max. 16bar
<b>WORKING TEMP.:</b>	Max. +80°C
<b>TIGHTENING TORQUE:</b>	75Nm to be carried out with dynamometer wrench.

PIPE	RANGE	VITE - SCREW		A (mm)	H (mm)	D (mm)	Weight (kg)
		M x L	NR.				
DN50	59-72	M12x120	2	155	72	165	3,1
DN65	72-85	M12x120	2	172	75	185	3,9
DN80	88-103	M12x130	4	186	76	201	4,9
DN100	109-128	M12x130	4	212	75	221	5,8
DN125	132-146	M12x130	4	248	75	250	7,2
DN150	159-182	M12x130	4	275	76	285	8,2
DN200	192-210	M12x130	4	302	85	340	11,0
DN200	218-235	M12x130	4	325	76	340	9,8
DN225/250	250-267	M12x140	6	365	92	407	14,0
DN250	272-289	M12x140	6	385	90	400	16,2
DN300	315-332	M12x140	6	440	91	480	16,8
DN350	351-378	M16x180	8	516	111	522	30,5
DN400	400-429	M16x180	8	570	120	584	35,4
DN450	476-493	M16x180	10	630	115	647	39,3
DN500	500-532	M16x180	10	668	123	715	51,8
DN600	600-630	M16x180	10	777	135	837	65,3
DN600	630-647	M16x180	10	790	135	840	63,0

	COMPONENTI - PARTS	MATERIALI - MATERIALS
1	CORPO BODY	EN GJS400-15 EN GJS400-15
2	ANELLO END RING	EN GJS400-15 EN GJS400-15
3	VITE, DADO, RONDELLA SCREW, NUT, WASHER	ACCIAIO 8.8 DACROMET 8.8 DACROMET STEEL
4	GUARNIZIONE GASKET	EPDM EPDM

## RIVESTIMENTO - COATING

Esterno/interno con polvere epossidica di colore blu RAL 5015 e spessore 250µm.

External/internal FBE coating process with epoxy resin powder of blue colour RAL 5015 and thickness of 250µm.