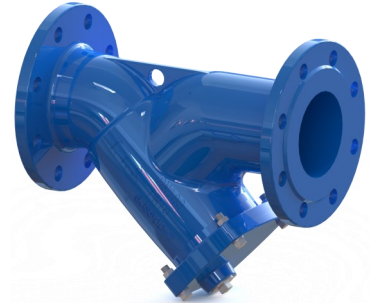




## ART. G032 TIS2 EP



### FILTRO A "Y" PN16

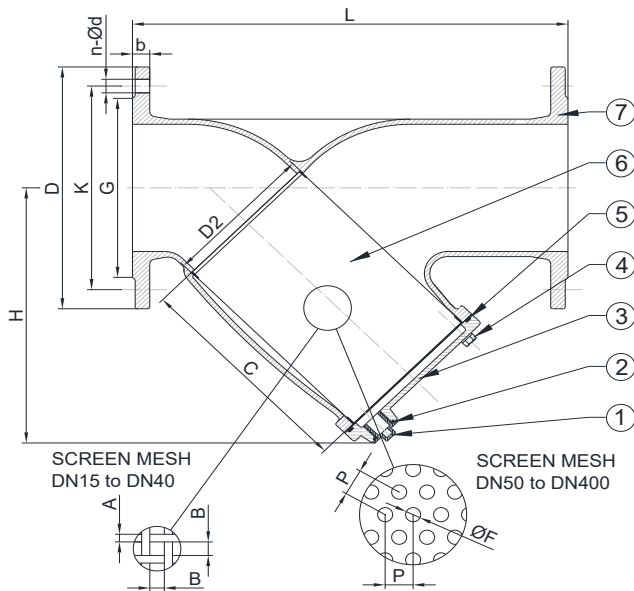
### "Y" TYPE STRAINER PN16

#### APPLICAZIONE:

Fornitura, raccolta, distribuzione di acqua, reti per la raccolta e deflusso acque di scarico.

#### APPLICATION:

Supply, collection, distribution of water, networks for the collection and discharge of waste water.



#### CARATTERISTICHE PRINCIPALI - MAIN FEATURES

<b>SCARTAMENTO:</b>	EN 558 Serie 1
<b>FLANGE:</b>	EN 1092-2
<b>COLLAUDI:</b>	EN 12266-1
<b>TEMPERATURA ESERCIZIO:</b>	Max. +70°C

<b>FACE TO FACE:</b>	EN 558 Serie 1
<b>FLANGES:</b>	EN 1092-2
<b>TESTS:</b>	EN 12266-1
<b>WORKING TEMPERATURE:</b>	Max. +70°C

	COMPONENTI - PARTS	MATERIALI - MATERIALS
1	TAPPO DRENAGGIO DRAIN PLUG	ACCIAIO INOX A2-70 A2-70 STAINLESS STEEL
2	O-RING O-RING	EPDM EPDM
3	COPERCHIO COVER	GHISA SFEROIDALE EN-GJS 500-7 DUCTILE IRON EN-GJS 500-7
4	VITERIA FASTENERS	ACCIAIO INOX A2-70 A2-70 STAINLESS STEEL
5	GUARNIZIONE GASKET	EPDM EPDM
6	FILTRO SCREEN	ACC.INOX AISI 304 (EN 1.4301) SS AISI 304 (EN 1.4301)
7	CORPO BODY	GHISA SFEROIDALE EN-GJS 500-7 DUCTILE IRON EN-GJS 500-7

#### RIVESTIMENTO - COATING

Esterno/interno con polvere epossidica di colore blu RAL 5015 e spessore 250µm.

External/internal FBE coating process with epoxy resin powder of blue colour RAL 5015 and thickness of 250µm.

DN	15	20	25	32	40	50	65	80	100	125	150	200	250	300	350	400
L	130	150	160	180	200	230	290	310	350	400	480	600	730	850	980	1100
H	78.5	84.5	87.5	105	108	135	160	184	211	262	301	370	486	582	650	714
D	95	105	115	140	150	165	185	200	220	250	285	340	405	460	520	580
K	65	75	85	100	110	125	145	160	180	210	240	295	355	410	470	525
G	46	56	65	76	84	99	118	132	156	184	211	266	319	370	429	480
b	14	16	16	18	19	19	19	19	19	19	19	20	22	24,5	26,5	28
n-ød	4-14	4-14	4-14	4-19	4-19	4-19	4-19	8-19	8-19	8-19	8-23	12-23	12-28	12-28	16-28	16-31
A	Ø0.4	Ø0.4	Ø0.4	Ø0.4	Ø0.4	-	-	-	-	-	-	-	-	-	-	-
B	0.83	0.83	0.83	0.83	0.83	-	-	-	-	-	-	-	-	-	-	-
ØF	-	-	-	-	-	2.0	2.0	2.0	2.0	2.0	3.0	3.0	3.0	3.0	3.0	3.0
P	-	-	-	-	-	4	4	4	4	4	5	5	5	5	5	5
BSP	NA	NA	1/2"	1/2"	1/2"	1/2"	1/2"	1/2"	3/4"	3/4"	3/4"	3/4"	3/4"	3/4"	1"	1"
C	59	65	68	89	89	118	147	160	184	241	253	282	429	505	549	595
D2	22	27	32	39	47	55	77	87	109	139	169	209	268	318	368	418
W (kg)	2.2	2.5	4.0	4.5	6.0	7.6	10.6	12.0	16.0	25.5	33.0	60.5	93.0	135	213	260