



PN 10 - Art. D147

PN 16 - Art. D148

VALVOLA CON CONTRAPESO E CILINDRO IDRAULICO PN10-PN16
COMBINED CHECK-BUTTERFLY VALVE PN10-PN16



APPLICAZIONE:

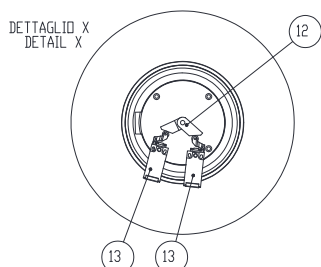
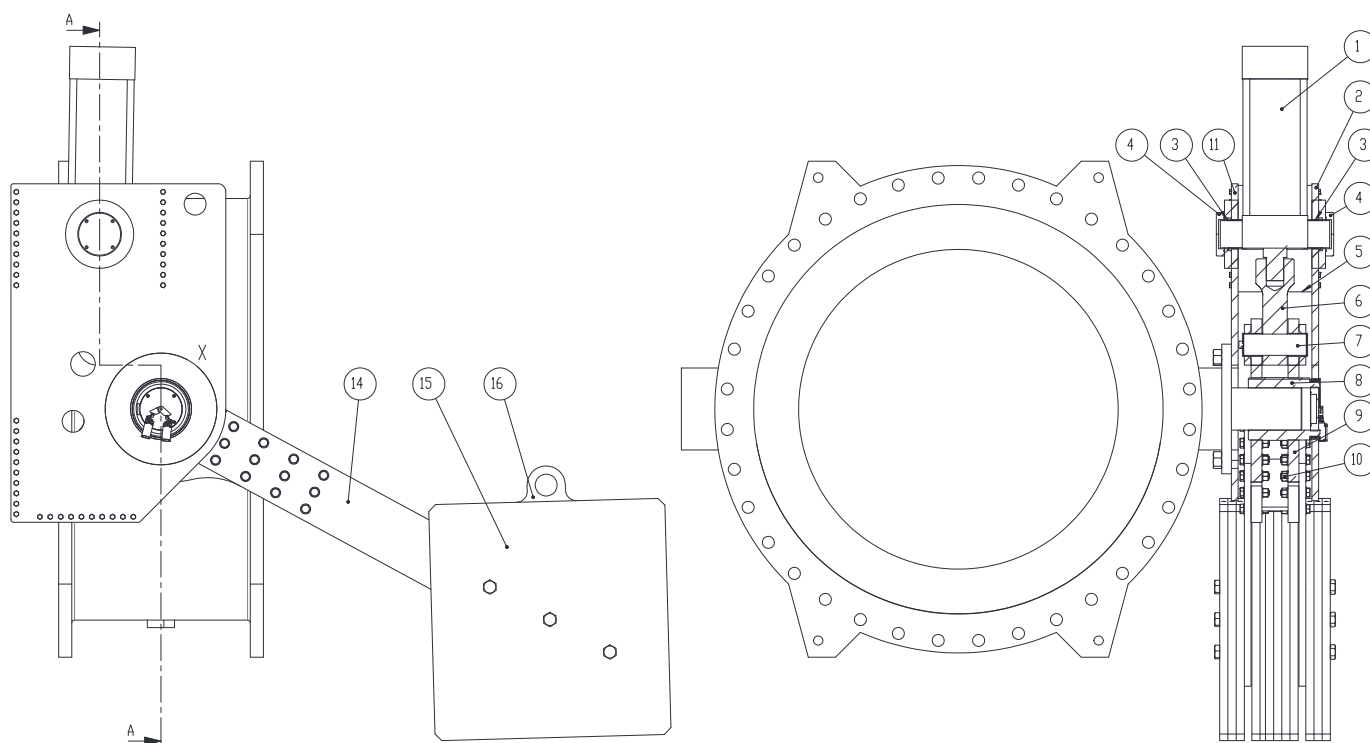
Stazioni di pompaggio, distribuzione acqua potabile, impianti di trattamento, bacini idrici, appl. industriali.

APPLICATION:

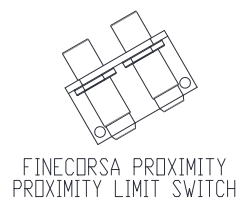
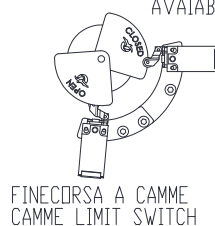
Pumping stations, drinkable water distribution, treatment plants, reservoirs, industrial applications.

CARATTERISTICHE PRINCIPALI - MAIN FEATURES

NORMA PROGETTO:	EN 593	DESIGN STANDARD:	EN 593
SCARTAMENTO:	EN 558 Serie14	FACE TO FACE:	EN 558 Series14
FLANGE:	EN 1092-2	FLANGES:	EN 1092-2
COLLAUDI:	EN 12266-1	TESTS:	EN 12266-1
TEMP. ESERCIZIO:	Max. +70°C	WORKING TEMP.:	Max. +70°C



DISPONIBILI A RICHIESTA
AVAILABLE ON REQUEST





PN 10 - Art. D147

PN 16 - Art. D148

	COMPONENTI - PARTS	MATERIALI - MATERIALS
1	CILINDRO IDRAULICO HYDRAULIC CYLINDER	- -
2	PIASTRA ESTERNA EXTERNAL PLATE	ACCIAIO S275JR (EN10025-2) 275JR STEEL (EN10025-2)
3	BOCCOLA CILINDRO CYLINDER BUSH	BRONZO CC333G (EN1982) CC333G BRONZE (EN1982)
4	TAPPO CILINDRO CYLINDER CAP	POLIETILENE POLYETHYLENE
5	DISTANZIALE SPACER	ACCIAIO S275JR (EN10025-2) 275JR STEEL (EN10025-2)
6	FORCELLA FORK	ACCIAIO S275JR (EN10025-2) / ACCIAIO INOX AISI420B 275JR STEEL (EN10025-2) / STAINLESSSTEEL AISI420B
7	SPINOTTO CILINDRO CYLINDER PIN	ACCIAIO INOX AISI420B STAINLESS STEEL AISI420B
8	MOZZO HUB	ACCIAIO S275JR (EN10025-2) 275JR STEEL (EN10025-2)
9	LEVA LEVER	ACCIAIO S275JR (EN10025-2) 275JR STEEL (EN10025-2)
10	VITI - DADI - RONDELLE SCREWS - NUTS - WASHERS	ACCIAIO ZINCATO 8.8 8.8 GALVANIZED STEEL
11	PIASTRA INTERNA INTERNAL PLATE	ACCIAIO S275JR (EN10025-2) 275JR STEEL (EN10025-2)
12	LEVA FINE-CORSA LIMIT SWITCH LEVER	OTTONE CW614N (EN12164) BRASS CW614N (EN12164)
13	FINE-CORSA MECCANICO MECHANICAL LIMIT SWITCH	- -
14	LEVA CONTRAPPESO COUNTERWEIGHT LEVER	ACCIAIO S275JR (EN10025-2) 275JR STEEL (EN10025-2)
15	CONTRAPPESO COUNTERWEIGHT	ACCIAIO S275JR (EN10025-2) 275JR STEEL (EN10025-2)
16	CONTRAPPESO CON ASOLA COUNTERWEIGHT WITH LIFTING HOLE	ACCIAIO S275JR (EN10025-2) 275JR STEEL (EN10025-2)