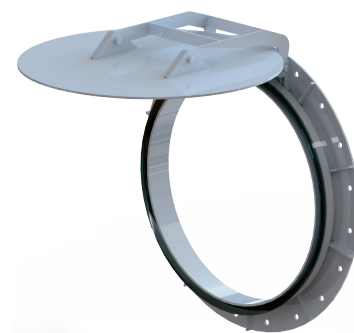




ART. C078 ST
ART. C078 SST



VALVOLA A CLAPET DI FINE LINEA ANTIRIFLUSSO A SEDE TONDA DRITTA
ROUND MODEL FLAP VALVE

APPLICAZIONE:

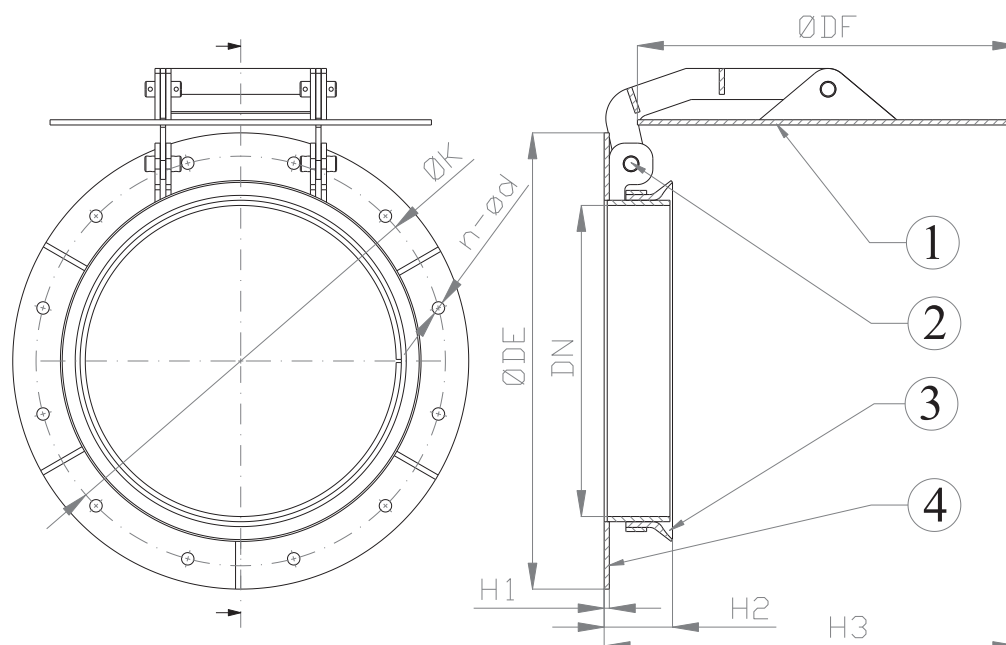
anti-riflusso nelle vasche di recupero piogge, reti fognarie o per protezione dalle inondazioni.

APPLICATION:

backflow preventer in rain storage reservoirs, sewerage systems or for flood protection purposes.

CARATTERISTICHE PRINCIPALI - MAIN FEATURES

FLANGE:	Per montaggio a parete (parete in accordo alla DIN 18202)	FLANGES:	For wall mounting (wall must be made according to DIN 18202)
TEMP. ESERCIZIO:	Max. +70°C	WORKING TEMP.:	Max.+70°C
PRESSIONE MAX. DI ESERCIZIO:	5mca	MAX. OPERATING PRESSURE:	5wmc



DN	ØDE	ØK	n-Ød	ØDF	H1	H2	H3
200	320	280	8-10	268	5	66	290
300	445	400	12-12	368	5	66	400
400	540	495	16-12	468	5	70	494
500	645	600	20-12	568	5	66	592
600	755	705	20-13	668	5	70	702
700	860	810	24-13	768	5	66	800
800	975	920	24-15	868	5	70	885
900	1075	1020	24-15	968	5	70	995
1000	1175	1120	28-18	1068	5	70	1080
1100	a richiesta / on request						
1200	1375	1320	32-15	1268	5	66	1283

	COMPONENTI PARTS	MATERIALI MATERIALS	
		C078ST	C078SST
1	COPERCHIO FLAP	AISI 304 AISI 304	AISI 316 AISI 316
2	ASSE SHAFT	AISI 304 AISI 304	AISI 316 AISI 316
3	TENUTA SEAT	EPDM EPDM	EPDM EPDM
4	TELAIO FRAME	AISI 304 AISI 304	AISI 316 AISI 316

A richiesta: flange forate PN6 / PN10 / PN16 per installazione di fine linea su tubo flangiato in accordo a EN1092.

On request: flanges drilled PN6 / PN10 / PN16 for end line installation with pipeline flanged according to EN1092.