



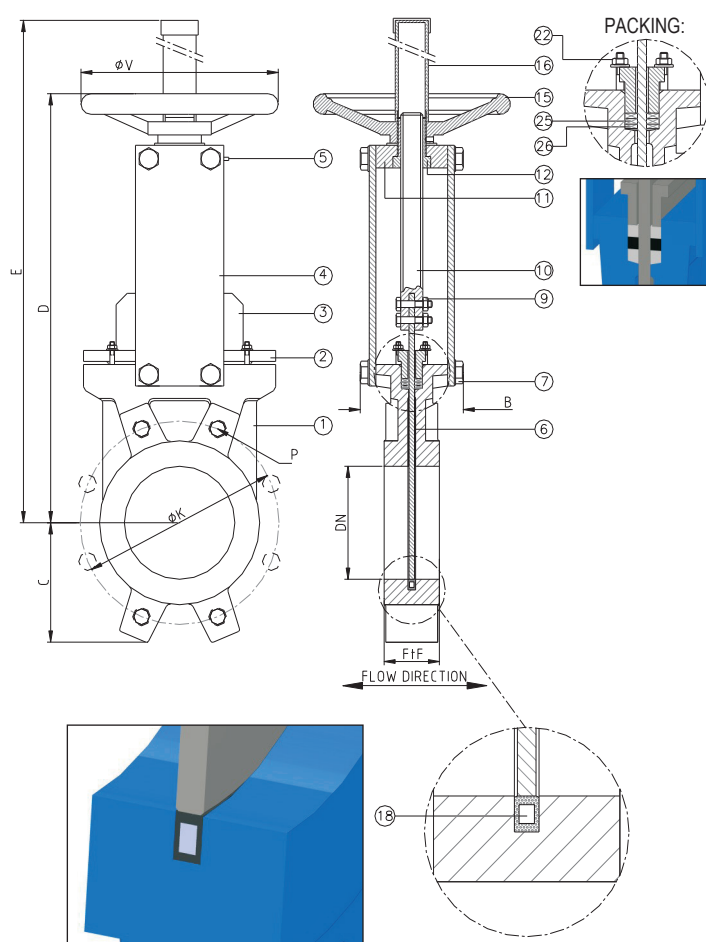
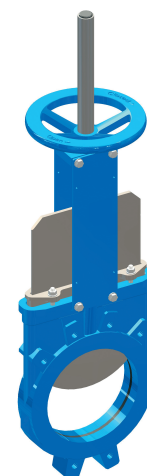
PN 10 - ART. A016/Z

SARACINESCA A GHIgliOTTINA BIDIREZIONALE MONOBLOCCO ASTA SALIENTE PN10
MONOBLOCK KNIFE GATE VALVE BIDIRECTIONAL TYPE RISING STEM PN10
APPLICAZIONE:

Fornitura e distribuzione acqua, trattamento acque reflue e sistemi fognari, settori industriali.

APPLICATION:

Water supply and distribution, waste water treatment and sewerage.



CARATTERISTICHE PRINCIPALI - MAIN FEATURES	
FLANGE:	Foratura secondo EN 1092-2 PN10
COLLAUDI:	EN 12266-1 in accordo alla PS della valvola
TEMPERATURA ESERCIZIO:	Max. ≤ +90°C
PRESSIONE ESERCIZIO:	Max. 10bar
FLANGES:	Drilled according to EN 1092-2 PN10
TESTS:	EN 12266-1 according to the valve PS
WORKING TEMPERATURE:	Max. ≤ +90°C
WORKING PRESSURE	Max. 10bar

	COMPONENTI - PARTS	MATERIALI - MATERIALS
1	CORPO BODY	EN-GJL 250 EN-GJL 250
2	PREMISTOPPA PACKING GLAND	ALLUMINIO ALUMINUM
3	PARATIA KNIFE	ACCIAIO INOX AISI 304L AISI 304L STAINLESS STEEL
4	SUPPORTO SUPPORT	ACCIAIO STEEL
5	INGRASSATORE GREASER	STANDARD STANDARD
6	GUIDE INTERNAL GUIDE	STANDARD STANDARD
7 - 9	BULLONI BOLTS	ACCIAIO INOX A2-70 A2-70 STAINLESS STEEL
10	ASSE STEM	ACCIAIO INOX AISI 303 AISI 303 STAINLESS STEEL
11	SUPPORTO SUPPORT BRIDGE	ACCIAIO STEEL
12	MADREVITE STEM NUT	OTTONE BRASS
15	VOLANTINO HANDWHEEL	EN-GJL 250 EN-GJL 250
16	TUBO RIPARATORE PROTECTIVE PIPE	ACCIAIO STEEL
18	GUARNIZIONE GASKET	GOMMA EPDM con rinforzo in acciaio EPDM RUBBER with core steel reinforcement
22	BULLONI BOLTS	ACCIAIO INOX A2-70 A2-70 STAINLESS STEEL
23	O-RING BADERNA PACKING O-RING	EPDM EPDM
24	BADERNA PACKING	CORDA TEFLONATA SYNTETIC FIBERS + PTFE

DN	K	n-M	FtF	B	C	D	E	ØV	W (kg)
50	125	4-M16	40	90	65	284	439	200	8
65	145	4-M16	40	90	68	308	464	200	9
80	160	8-M16	50	90	90	334	490	200	10
100	180	8-M16	50	90	105	374	536	200	12
125	210	8-M16	50	100	120	413	636	250	15
150	240	8-M20	60	100	135	465	686	250	19
200	295	8-M20	60	120	170	582	879	300	32
250	350	12-M20	70	120	205	682	1021	300	44

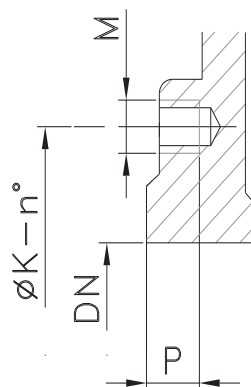
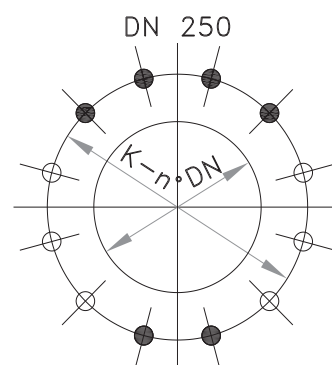
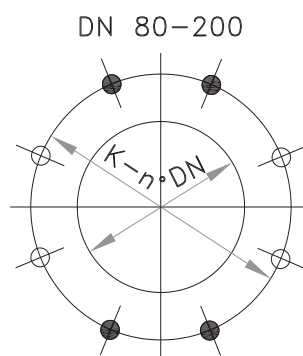
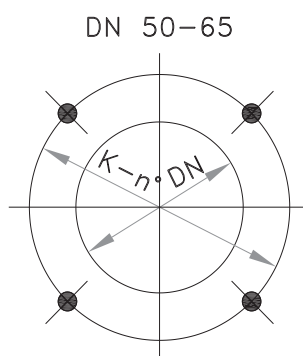
RIVESTIMENTO - COATING




Esterno/interno con polvere epossidica di colore blu RAL 5015 e spessore 80µm.

External/internal with epoxy resin powder of blue colour RAL 5015 and thickness of 80µm.



DETTAGLIO DELLE FLANGE EN1092-2 PN10
EN1092-2 PN10 FLANGE DETAILS



-  FORO FILETTATO CIECO
BLIND TAPPED BOLT HOLES
-  FORO FILETTATO PASSANTE
TAPPED THROUGH
-  FORI PASSANTI
THROUGH GOING BORE

DN	ØK	n°	M	P			
50	125	4	M16	10	4	-	-
65	145	4	M16	10	4	-	-
80	160	8	M16	10	4	-	4
100	180	8	M16	10	4	-	4
125	210	8	M16	10	4	-	4
150	240	8	M20	14	4	-	4
200	295	8	M20	14	4	-	4
250	350	12	M20	18	6	-	6