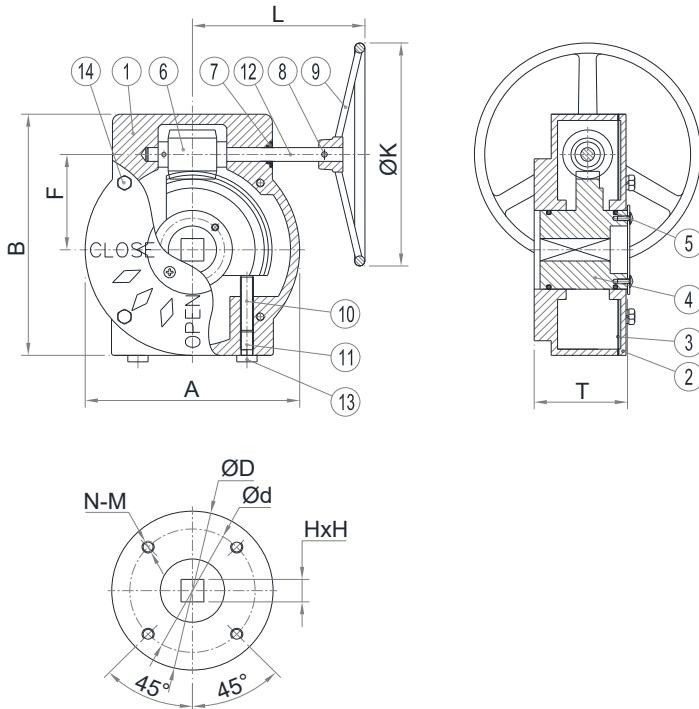




Art. 114015.05.11 [DN40]
 Art. 114015.07.11 [DN50 - DN80]
 Art. 114015.07.14 [DN100 - DN150]
 Art. 114015.10.17 [DN200]



RIDUTTORE MANUALE PER VALVOLE A FARFALLA CENTRICHE DA DN40 A DN200 BUTTERFLY CENTRIC VALVE MANUAL GEAR BOX FROM DN40 TO DN200



	COMPONENTI PARTS	MATERIALI MATERIALS
1	CORPO BODY	EN-GJL 180 EN-GJL 180
2	COPERCHIO COVER	EN-GJL 180 EN-GJL 180
3	GUARNIZIONE GASKET	NBR NBR
4	RUOTA DENTATA WORM WHEEL	EN-GJS 450 EN-GJS 450
5	O-RING O-RING	NBR NBR
6	VITE SENZA FINE WORM SHAFT	ACCIAIO AL CARBONIO CARBON STEEL
7	O-RING O-RING	NBR NBR
8	PERNO PIN	ACCIAIO INOX AISI 304 AISI 304 STAINLESS STEEL
9	VOLANTINO HAND WHEEL	GHISA GRIGIA CAST IRON
10	VITE REGOLAZIONE TRAVELING NUT	ACCIAIO AL CARBONIO CARBON STEEL
11	FERMO TRAVELING NUT STOP	ACCIAIO INOX A2 A2 STAINLESS STEEL
12	ASSE SHAFT	ACCIAIO INOX AISI 304 AISI 304 STAINLESS STEEL
13	TAPPO COVER	GOMMA RUBBER
14	VITE E RONDELLA SCREW AND WASHER	ACCIAIO INOX A2 A2 STAINLESS STEEL

RIVESTIMENTO - COATING

Esterno/interno con polvere epossidica di colore nero e spessore 200µm.
 External FBE coating process with epoxy resin powder of black colour and thickness of 200µm.

CUSTODIA - ENCLOSURE PROTECTION

Grado di protezione IP65 - Enclosure protection IP65.

DN	PN	Codice Code	Ratio	Giri per manovra Turns for one stroke	A	B	T	F	L	ØK	ØD	Ød	N-M	HxH	ISO 5211
40	16	114010.05.11	24:1	6	101	122	67	45	150	146	65	50	4-M6	11x11	F05
50	16	114010.07.11	24:1	6	101	122	67	45	150	146	90	70	4-M8	11x11	F07
65	16	114010.07.11	24:1	6	101	122	67	45	150	146	90	70	4-M8	11x11	F07
80	16	114010.07.11	24:1	6	101	122	67	45	150	146	90	70	4-M8	11x11	F07
100	16	114010.07.14	24:1	6	101	122	67	45	150	146	90	70	4-M8	14x14	F07
125	16	114010.07.14	24:1	6	101	122	67	45	150	146	90	70	4-M8	14x14	F07
150	16	114010.07.14	24:1	6	101	122	67	45	150	146	90	70	4-M8	14x14	F07
200	16	114010.10.17	30:1	7.5	144	168	79	66	220	280	125	102	4-M10	17x17	F10